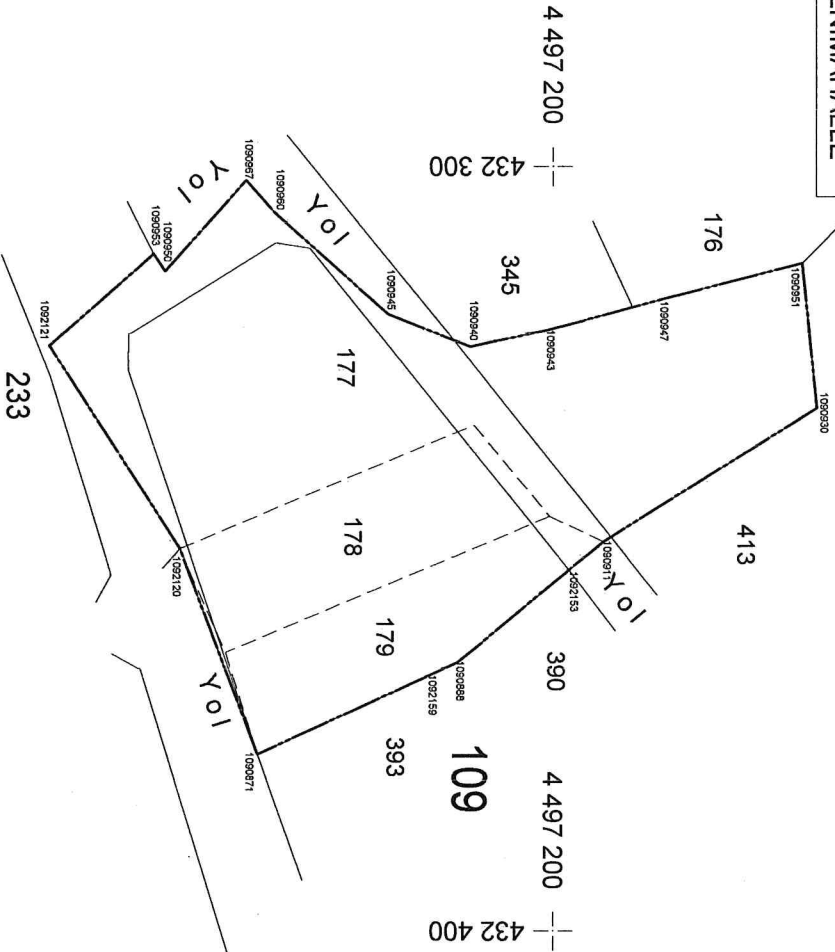


İLİ	YALOVA
İLÇESİ	TERMAL
MAH/KÖY	YENİMAHALLE

YALOVA İLİ TERMAL İLÇESİ YENİMAHALLE  
18. MADDE UYGULAMASI DÜZENLEME SINIR KROKİSİ



NoktaNo	Y	X	NoktaNo	Y	X
1090871	432376,76	4497161,24	1092159	432366,35	4497183,92
1090888	432364,71	4497187,47	1092153	432352,61	4497202,09
1092120	432349,75	4497151,04	1090911	432348,86	4497206,63
1090930	432331,46	4497234,59	1090940	432323,47	4497189,13
1092121	432323,28	4497133,95	1090943	432321,30	4497199,32
1090945	432319,24	4497178,43	1090947	432317,16	4497214,63
1090950	432313,53	4497149,10	1090951	432312,56	4497232,64
1090953	432311,26	4497147,61	1090960	432305,93	4497163,48
1090967	432301,76	4497159,74			

Ada	Parsel	Noktalar	HesapAlan
DÜZ-ALAN		1090967,1090960,1090945, 1090940,1090943,1090947, 1090951,1090930,1090911, 1092153,1090888,1092159, 1090871,1092120,1092121, 1090953,1090950	3735,88

UYGUNDUR		KONTROL EDİLMİŞTİR	
BELEDİYE / ÖZEL İDARE/PROJE İDARESİ			
KONTROL EDEN	ONAYLAYAN	KADASTRO MÜDÜRLÜĞÜ	
ADİ SOYADI	MABİ DEMİRCİ		
TARİH	08/08/2023		
İMZA			

4 497 100 — 4 32 300

4 497 200 — 4 32 500

1/1000



SEYİŞ MÜHÜRÜ  
SAYIN VE TİC. LTD.  
YALOVA İLİ TERMAL İLÇESİ YENİMAHALLE  
18. MADDE UYGULAMASI DÜZENLEME SINIR KROKİSİ  
08/08/2023  
1090967,1090960,1090945,  
1090940,1090943,1090947,  
1090951,1090930,1090911,  
1092153,1090888,1092159,  
1090871,1092120,1092121,  
1090953,1090950