

BELEDİYE BAŞKANLIĞINA

TERMAL

İlimiz Termal İlçesi , Üvezpınar Köyü , 101 Ada 1 + 27 ve 47 nolu parsellerin malikleriyiz.

Söz konusu parsellerimizi kapsayan sahada belediyenizce Res'en İmar Uygulaması yapılmasını talep ediyoruz.

Bu hususta gereğinin yapılmasını saygılarımızla arz ederiz.

30/03/2026

MUSG ATIK

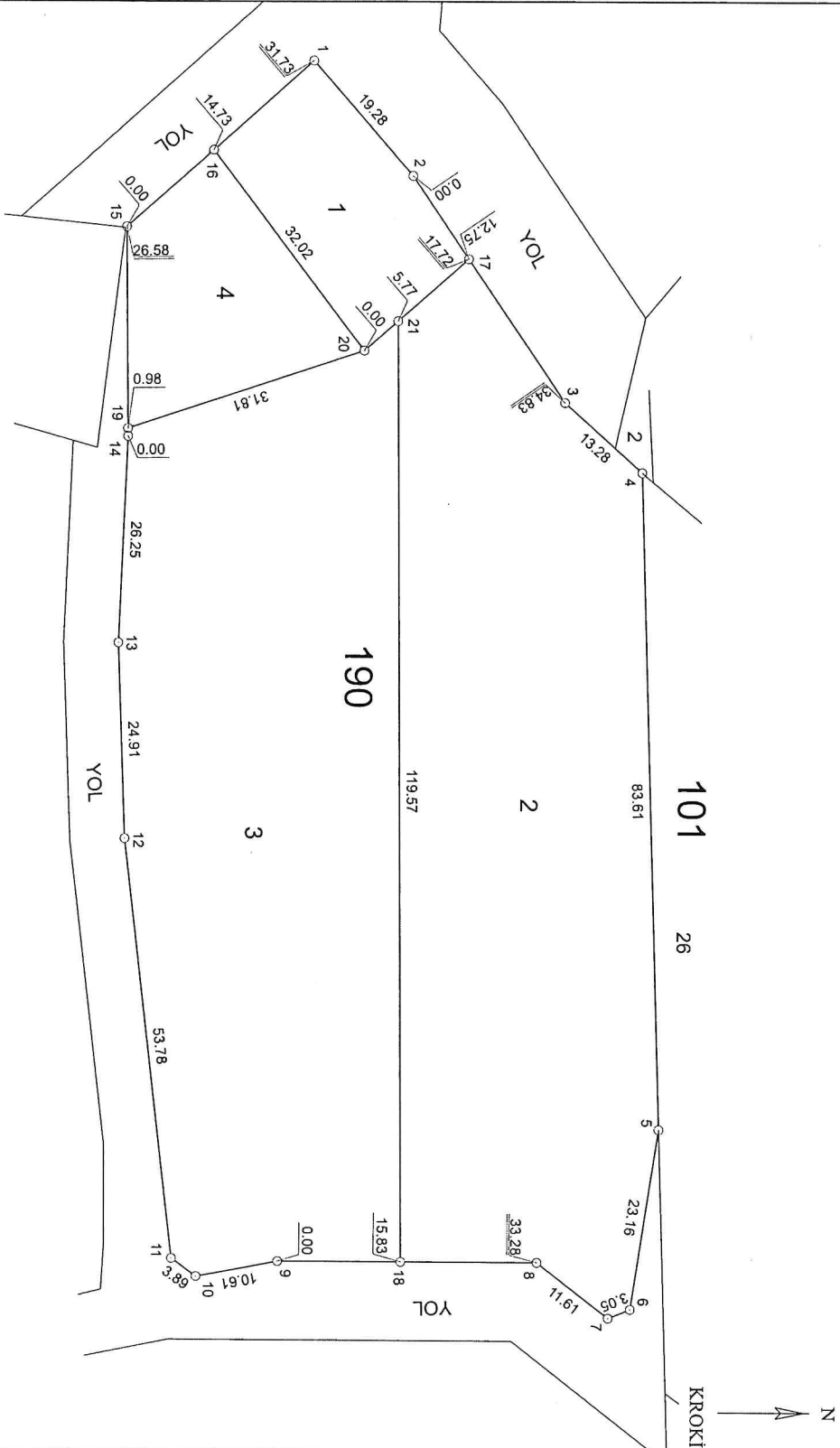

Adres :

Ekleri :

1- Üç adet tapu kayıt sureti

Ölçü Krokisi

EK-18



İLİ	: YALOVA	DÜZENLEYEN	UYGUNDUR	BELEDİYE/ÖZEL İDARE	KADASTRO MÜDÜRLÜĞÜ
İLÇESİ	: TERMAL	KONTROL EDEN	ONAYLAYAN	KONTROL EDEN	
MAH./KÖY	: ÜVEZPINAR	ADI-SOYADI			
PAFTA NO	: G22D14D3C-19A2B	TARİH			
ADAPARSEL NO	: 190 / 1+2+3+4	İMZA			

Datum : ITRF 96
Projeksiyon : UTM 3°

Nokta No	Y	X	MK
1900001	429731.87	4496458.29	0.09
1900002	429746.28	4496471.09	0.09
1900003	429775.03	4496490.76	0.09
1900004	429783.79	4496500.75	0.09
1900005	429867.35	4496503.44	0.09
1900006	429890.25	4496499.94	0.09
1900007	429891.38	4496497.11	0.09
1900008	429884.29	4496487.91	0.09
1900009	429884.23	4496454.63	0.09
1900010	429886.18	4496444.20	0.09
1900011	429883.89	4496441.05	0.09
1900012	429830.49	4496434.67	0.09
1900013	429805.60	4496433.70	0.09
1900014	429779.37	4496434.76	0.09
1900015	429752.80	4496434.44	0.09
1900016	429743.08	4496445.51	0.09
1900017	429756.81	4496478.29	0.09
1900018	429884.26	4496470.46	0.09
1900019	429778.39	4496434.75	0.09
1900020	429768.50	4496464.98	0.09
1900021	429764.69	4496469.32	0.09

KOORDİNE ÖZET ÇİZELGESİ

Nokta No	Y	X	MK
1900001	429731.87	4496458.29	0.09
1900002	429746.28	4496471.09	0.09
1900003	429775.03	4496490.76	0.09
1900004	429783.79	4496500.75	0.09
1900005	429867.35	4496503.44	0.09
1900006	429890.25	4496499.94	0.09
1900007	429891.38	4496497.11	0.09
1900008	429884.29	4496487.91	0.09
1900009	429884.23	4496454.63	0.09
1900010	429886.18	4496444.20	0.09
1900011	429883.89	4496441.05	0.09
1900012	429830.49	4496434.67	0.09
1900013	429805.60	4496433.70	0.09
1900014	429779.37	4496434.76	0.09
1900015	429752.80	4496434.44	0.09
1900016	429743.08	4496445.51	0.09
1900017	429756.81	4496478.29	0.09
1900018	429884.26	4496470.46	0.09
1900019	429778.39	4496434.75	0.09
1900020	429768.50	4496464.98	0.09
1900021	429764.69	4496469.32	0.09

YÜZÖLÇÜM HESABI

Ada	Parsel	Noktalar	HesapAlan
190	1	1900020,1900016,1900001, 1900002,1900017,1900021	570.01
190	2	1900018,1900021,1900017, 1900003,1900004,1900005, 1900006,1900007,1900008	3753.50
190	3	1900009,1900010,1900011, 1900012,1900013,1900014, 1900019,1900020,1900021, 1900018	3800.18
190	4	1900015,1900016,1900020, 1900019	623.72
Toplam			8747.41
Ada Alanı			8747.41
Fark			0.00
Tevviz			36.04

Zehra BAHAR
Harita Mühendisi
Sicil No: 24602



İLİ : YALOVA
İLÇESİ : TERMAL
KÖYÜ/MAHALLESİ : ÜVEZPINAR
T.C. TERMAL BELEDİYESİ

BELEDİYESİ

NOLU UYGULAMA SAHASI

Ö Z E T C E T V E L İ

K A D A S T R O

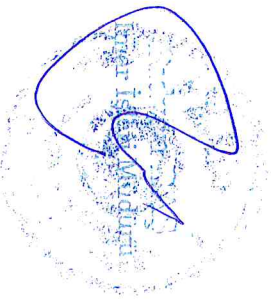
Ada/Par	Alan	Kamu.	Y.Terk	D.Girmeyen	Dopal	Dopalma	Dop	İ.Tahsis	İ M A R
101/1	938.64	-	335.29	-	-	938.64	-	0.00	AdaNo Alan
101/27	3486.10	-	-	-	3486.10	-	241.28	938.64	190 8747.41
101/47	4903.31	-	-	-	4903.31	-	339.36	3244.82	
								4563.95	

K A D A S T R O T O P L A M L A R I										İ M A R
Toplam Pay	Toplam Alan	Toplam Kamu	Toplam Y.Terk	Toplam D.Girmeyen	Toplam Dopal	Top. Düz. Dopalma	Düz. Giren Dop	Toplam Tahsis	Toplam Alan	
9328.05	9328.05	0.00	335.29	0.00	8389.41	938.64	580.64	8747.41	8747.41	

Düzenleme Ortaklık Payı Hesabı

Düzenlemeye Giren Alanlar (R1)	=	8389.41
Eski DOPO > Proje DOPO Alanlar (D1)	=	0.00
İmar Alanları (R2)	=	8747.41
Eski DOPO > Proje DOPO Tahsisler (D2)	=	0.00
DOP Alınmayan Alanlar (R3)	=	938.64
Düzenleme Ortaklık Payı	=	(R1 - D1 - R2 + D2 + R3) / (R1-D1)
Ortak Katılım Oranı	=	0.00000000
Düzenleme Ortaklık Payı Oranı (DOPO)	=	0.0692111
DOPO (OKO ile birlikte)	=	0.0692111
Maksimum Dop Oranı	=	0.45

Zehra BAĞCI
Harita Mühendisi
Şicil No: 24602



TOPLAM ALAN : 9328.05
TOPLAM PAY : 9328.05
TOPLAM KAMULAŞTIRMA : 0.00
TOP. DÜZENLE. GİRMEYEN : 0.00
TOP. DÜZENLEMEYE GİREN : 9328.05

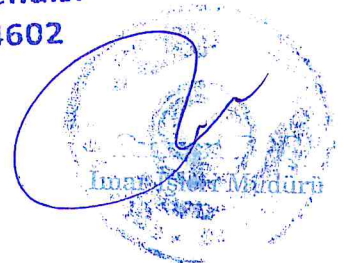
M A L S A H İ P L E R İ A R A Ş T I R M A
V E
Ö Z E T F O R M U
(K A D A S T R O P A R S E L İ N E S I R A L I)

SAYFA NO:1

TOPLAM ADA ALANI : 8747.41
O.KATILIM ORANI : 0.0000000
D.O.FAYI ORANI : 0.0692111

K A D A S T R O								İ M A R			
SNo	Pafta	Ada/Par	Alan/Pay	Hisse	Malik/Baba Adı	Kamu	Dop/İTh	Ada/Par	Alan	Hisse	Pay
1	G22D14D3C-	101/1	938.64 328.22	328 938	MALİYE HAZİNESİ	-	- 328.21	190/1	570.01	32821/57001	328.21
2	G22D14D3C-	101/1	938.64 101.74	305 2814	ZEHRA ÖNDER GALİP	-	- 101.73	190/2	3753.51	10173/375351	101.73
3	G22D14D3C-	101/1	938.64 101.74	305 2814	CEMİLE GENÇTÜRK GALİP	-	- 101.73	190/2	3753.51	10173/375351	101.73
4	G22D14D3C-	101/1	938.64 101.74	305 2814	MUSA ATİK GALİP	-	- 101.74	190/1	570.01	10174/57001	101.74
5	G22D14D3C-	101/1	938.64 25.43	305 11256	İSMAİL HAKKI TOPARLAK FEYZULLAH	-	- 25.43	190/2	3753.51	2543/375351	25.43
6	G22D14D3C-	101/1	938.64 38.15	305 7504	KÖKSAL TOPARLAK İSMAİL HAKKI	-	- 38.15	190/2	3753.51	3815/375351	38.15
7	G22D14D3C-	101/1	938.64 38.15	305 7504	YÜKSEL TOPARLAK İSMAİL HAKKI	-	- 38.15	190/2	3753.51	3815/375351	38.15
8	G22D14D3C-	101/1	938.64 19.08	305 15008	MELİKE ÇOK KUYTU NECATİ	-	- 19.08	190/2	3753.51	1908/375351	19.08
9	G22D14D3C-	101/1	938.64 19.08	305 15008	MUAMMER ÇOK NECATİ	-	- 19.08	190/2	3753.51	1908/375351	19.08
10	G22D14D3C-	101/1	938.64 19.08	305 15008	MESUT ÇOK NECATİ	-	- 19.08	190/2	3753.51	1908/375351	19.08
11	G22D14D3C-	101/1	938.64 19.08	305 15008	MÜNEVVER ATİK NECATİ	-	- 19.08	190/2	3753.51	1908/375351	19.08
12	G22D14D3C-	101/1	938.64 25.43	305 11256	NECATİ ÇOK MUHARREM	-	- 25.43	190/2	3753.51	2543/375351	25.43
13	G22D14D3C-	101/1	938.64 20.35	61 2814	ASIYE SEVENGİL ADNAN	-	- 20.35	190/2	3753.51	2035/375351	20.35
14	G22D14D3C-	101/1	938.64 20.35	61 2814	ARZU DÜREMEZ ADNAN	-	- 20.35	190/2	3753.51	2035/375351	20.35
15	G22D14D3C-	101/1	938.64 20.35	61 2814	ZERRİN PİRİNÇ ADNAN	-	- 20.35	190/2	3753.51	2035/375351	20.35
16	G22D14D3C-	101/1	938.64 20.35	61 2814	AYSUN BAHAR ADNAN	-	- 20.35	190/2	3753.51	2035/375351	20.35
17	G22D14D3C-	101/1	938.64 20.35	61 2814	İNCİ KAŞ ADNAN	-	- 20.35	190/2	3753.51	2035/375351	20.35
18	G22D14D3C-	101/27	3486.10 581.02	1 6	ZEHRA ÖNDER GALİP	-	40.21 540.81	190/2	3753.51	54081/375351	540.81
19	G22D14D3C-	101/27	3486.10 581.02	1 6	CEMİLE GENÇTÜRK GALİP	-	40.21 540.81	190/2	3753.51	54081/375351	540.81
20	G22D14D3C-	101/27	3486.10 145.25	1 24	İSMAİL HAKKI TOPARLAK FEYZULLAH	-	10.05 135.19	190/2	3753.51	13519/375351	135.19
21	G22D14D3C-	101/27	3486.10 217.88	1 16	KÖKSAL TOPARLAK İSMAİL HAKKI	-	15.08 202.80	190/2	3753.51	20280/375351	202.80
22	G22D14D3C-	101/27	3486.10 217.88	1 16	YÜKSEL TOPARLAK İSMAİL HAKKI	-	15.08 202.80	190/2	3753.51	20280/375351	202.80
23	G22D14D3C-	101/27	3486.10 108.94	1 32	MELİKE ÇOK KUYTU NECATİ	-	7.54 101.40	190/2	3753.51	10140/375351	101.40
24	G22D14D3C-	101/27	3486.10 108.94	1 32	MUAMMER ÇOK NECATİ	-	7.54 101.40	190/2	3753.51	10140/375351	101.40
25	G22D14D3C-	101/27	3486.10 108.94	1 32	MESUT ÇOK NECATİ	-	7.54 101.40	190/2	3753.51	10140/375351	101.40
26	G22D14D3C-	101/27	3486.10 108.94	1 32	MÜNEVVER ATİK NECATİ	-	7.54 101.40	190/2	3753.51	10140/375351	101.40
27	G22D14D3C-	101/27	3486.10 145.25	1 24	NECATİ ÇOK MUHARREM	-	10.05 135.20	190/2	3753.51	13520/375351	135.20
28	G22D14D3C-	101/27	3486.10 581.02	1 6	HÜSEYİN HAYRETTİN SOYER NECATİ	-	40.21 540.81	190/2	3753.51	54081/375351	540.81
29	G22D14D3C-	101/27	3486.10 116.20	1 30	ASIYE SEVENGİL ADNAN	-	8.04 108.16	190/2	3753.51	10816/375351	108.16

Zehra BAHAR
Harita Mühendisi
Sicil No: 24602



TOPLAM ALAN : 9328.05 TOPLAM PAY : 9328.05 TOPLAM KAMULAŞTIRMA : 0.00 TOP. DÜZENLE. GİRMEYEN: 0.00 TOP. DÜZENLEMeye GİREN: 9328.05		M A L S A H İ P L E R İ A R A Ş T I R M A V E Ö Z E T F O R M U (K A D A S T R O P A R S E L İ N E S I R A L I)						SAYFA NO:2 TOPLAM ADA ALANI : 8747.41 O.KATILIM ORANI : 0.0000000 D.O.PAYI ORANI : 0.0692111				
K A D A S T R O									İ M A R			
SNo	Pafta	Ada/Par	Alan/Pay	Hisse	Malik/Baba Adı	Kamu	Dop/İTh	Ada/Par	Alan	Hisse	Pay	
30	G22D14D3C-	101/27	3486.10 116.20	1 30	ARZU DÜREMEZ ADNAN	-	8.04 108.16	190/2	3753.51	10816/375351	108.16	
31	G22D14D3C-	101/27	3486.10 116.20	1 30	ZERRİN PİRİNÇ ADNAN	-	8.04 108.16	190/2	3753.51	10816/375351	108.16	
32	G22D14D3C-	101/27	3486.10 116.20	1 30	AYSUN BAHAR ADNAN	-	8.04 108.16	190/2	3753.51	10816/375351	108.16	
33	G22D14D3C-	101/27	3486.10 116.20	1 30	İNCİ KAŞ ADNAN	-	8.04 108.16	190/2	3753.51	10816/375351	108.16	
34	G22D14D3C-	101/47	4903.31 4903.31	TAM	MUSA ATİK GALİP	-	339.36 4563.95	190/1 190/3 190/4	570.01 3800.17 623.72	14006/57001 TAM TAM	140.06 3800.17 623.72	

Zehra BAHAR
 Harita Mühendisi
 Sicil No: 24602



TOPLAM ALAN : 9328.05	TESCİLE ESAS	SAYFA NO:1
TOPLAM PAY : 9328.05	DAĞITIM CETVELİ	TOPLAM ADA ALANI : 8747.41
TOPLAM KAMULAŞTIRMA : 0.00	(İMAR PARSELİNE SIRALI)	O.KATILIM ORANI : 0.0000000
TOP. DÜZENLE. GİRMEYEN: 0.00		D.O.PAYI ORANI : 0.0692111
TOP. DÜZENLEMESİNE GİREN: 9328.05		

K A D A S T R O							İ M A R					
SNo	Pafta	Ada/Par	Alan	Hisse	Malik/Baba Adı	Kamu	Dop/İth	Ada/Par	Alan	Hisse	Pay	
1	G22D14D3C-	101/1	938.64	328/938	MALİYE HAZİNESİ	-	-	190/1	570.01	32821/57001	328.21	
4		101/1	938.64	328.22	MUSA ATIK	-	328.21			10174/57001	101.74	
34		101/47	4903.31	305/2814 101.74 TAM 4903.31	MUSA ATIK GALİP MUSA ATIK GALİP	-	101.74 339.36 4563.95			14006/57001	140.06	
2	G22D14D3C-	101/1	938.64	305/2814	ZEHRA ÖNDER	-	-	190/2	3753.51	10173/375351	101.73	
3		101/1	938.64	101.74	GALİP	-	101.73			10173/375351	101.73	
5		101/1	938.64	305/2814	CEMİLE GENÇTÜRK	-	-			2543/375351	25.43	
6		101/1	938.64	101.74	GALİP	-	101.73			3815/375351	38.15	
7		101/1	938.64	305/11256	İSMAİL HAKKI TOPARLAK	-	-			3815/375351	38.15	
8		101/1	938.64	25.43	FEYZULLAH	-	25.43			1908/375351	19.08	
9		101/1	938.64	305/7504	KÖKSAL TOPARLAK	-	-			1908/375351	19.08	
10		101/1	938.64	38.15	İSMAİL HAKKI	-	38.15			1908/375351	19.08	
11		101/1	938.64	305/7504	YÜKSEL TOPARLAK	-	-			1908/375351	19.08	
12		101/1	938.64	38.15	İSMAİL HAKKI	-	38.15			2543/375351	25.43	
13		101/1	938.64	305/15008	MELİKE ÇOK KUYTU	-	-			2035/375351	20.35	
14		101/1	938.64	19.08	NECATİ	-	19.08			2035/375351	20.35	
15		101/1	938.64	305/15008	MUAMMER ÇOK	-	-			2035/375351	20.35	
16		101/1	938.64	19.08	NECATİ	-	19.08			2035/375351	20.35	
17		101/1	938.64	305/15008	MESUT ÇOK	-	-			2035/375351	20.35	
18		101/1	938.64	19.08	NECATİ	-	19.08			2035/375351	20.35	
19		101/1	938.64	305/15008	MÜNEVVER ATIK	-	-			2035/375351	20.35	
20		101/1	938.64	19.08	NECATİ	-	19.08			2035/375351	20.35	
21		101/1	938.64	305/11256	NECATİ ÇOK	-	-			2035/375351	20.35	
22		101/1	938.64	25.43	MUHAMMAD	-	25.43			2035/375351	20.35	
23		101/1	938.64	61/2814	ASİYE SEVENGİL	-	-			2035/375351	20.35	
24		101/1	938.64	20.35	ADNAN	-	20.35			2035/375351	20.35	
25		101/1	938.64	61/2814	ARZU DÜREMEZ	-	-			2035/375351	20.35	
26		101/1	938.64	20.35	ADNAN	-	20.35			2035/375351	20.35	
27		101/1	938.64	61/2814	ZERRİN PİRİNÇ	-	-			2035/375351	20.35	
28		101/1	938.64	20.35	ADNAN	-	20.35			2035/375351	20.35	
29		101/1	938.64	61/2814	AYSUN BAHAR	-	-			2035/375351	20.35	
30		101/1	938.64	20.35	ADNAN	-	20.35			2035/375351	20.35	
31		101/1	938.64	61/2814	İNCİ KAŞ	-	-			2035/375351	20.35	
32		101/27	3486.10	20.35	ADNAN	-	20.35			2035/375351	20.35	
33		101/27	3486.10	1/6	ZEHRA ÖNDER	-	40.21			54081/375351	540.81	
34		101/27	3486.10	581.02	GALİP	-	540.81			54081/375351	540.81	
35		101/27	3486.10	1/6	CEMİLE GENÇTÜRK	-	40.21			54081/375351	540.81	
36		101/27	3486.10	581.02	GALİP	-	540.81			13519/375351	135.19	
37		101/27	3486.10	1/24	İSMAİL HAKKI TOPARLAK	-	10.05			15.08	20280/375351	202.80
38		101/27	3486.10	145.25	FEYZULLAH	-	135.19			20280/375351	202.80	
39		101/27	3486.10	1/16	KÖKSAL TOPARLAK	-	15.08			20280/375351	202.80	
40		101/27	3486.10	217.88	İSMAİL HAKKI	-	202.80			7.54	10140/375351	101.40
41		101/27	3486.10	1/16	YÜKSEL TOPARLAK	-	15.08			7.54	10140/375351	101.40
42		101/27	3486.10	217.88	İSMAİL HAKKI	-	202.80			7.54	10140/375351	101.40
43		101/27	3486.10	1/32	MELİKE ÇOK KUYTU	-	7.54			10140/375351	101.40	
44		101/27	3486.10	108.94	NECATİ	-	101.40			7.54	10140/375351	101.40
45		101/27	3486.10	1/32	MUAMMER ÇOK	-	7.54			10140/375351	101.40	
46		101/27	3486.10	108.94	NECATİ	-	101.40			7.54	10140/375351	101.40
47		101/27	3486.10	1/32	MESUT ÇOK	-	7.54			10140/375351	101.40	
48		101/27	3486.10	108.94	NECATİ	-	101.40			10.05	13520/375351	135.20
49		101/27	3486.10	1/32	MÜNEVVER ATIK	-	7.54			40.21	54081/375351	540.81
50		101/27	3486.10	108.94	NECATİ	-	101.40			8.04	10816/375351	108.16
51		101/27	3486.10	1/24	NECATİ ÇOK	-	10.05			8.04	10816/375351	108.16
52		101/27	3486.10	145.25	MUHAMMAD	-	135.20			8.04	10816/375351	108.16
53		101/27	3486.10	1/6	HÜSEYİN HAYRETTİN SOYER	-	40.21			8.04	10816/375351	108.16
54		101/27	3486.10	581.02	NECATİ	-	540.81			8.04	10816/375351	108.16
55		101/27	3486.10	1/30	ASİYE SEVENGİL	-	8.04			8.04	10816/375351	108.16
56		101/27	3486.10	116.20	ADNAN	-	108.16			8.04	10816/375351	108.16
57		101/27	3486.10	1/30	ARZU DÜREMEZ	-	8.04			8.04	10816/375351	108.16
58		101/27	3486.10	116.20	ADNAN	-	108.16			8.04	10816/375351	108.16
59		101/27	3486.10	1/30	ZERRİN PİRİNÇ	-	8.04			8.04	10816/375351	108.16
60		101/27	3486.10	116.20	ADNAN	-	108.16			8.04	10816/375351	108.16
61		101/27	3486.10	1/30	AYSUN BAHAR	-	8.04			8.04	10816/375351	108.16
62		101/27	3486.10	116.20	ADNAN	-	108.16			8.04	10816/375351	108.16
63		101/27	3486.10	1/30	İNCİ KAŞ	-	8.04			8.04	10816/375351	108.16
64		101/27	3486.10	116.20	ADNAN	-	108.16			8.04	10816/375351	108.16
34	G22D14D3C-	101/47	4903.31	TAM 4903.31	MUSA ATIK GALİP	-	339.36 4563.95	190/3	3800.17	TAM	3800.17	
34	G22D14D3C-	101/47	4903.31	TAM 4903.31	MUSA ATIK GALİP	-	339.36 4563.95	190/4	623.72	TAM	623.72	

Zehra BAHAR
Harita Mühendisi
Sicil No: 2460

